

# Canopy Offshore Wind Project

## RWE Progress Report

<b>Document Date:</b>	July 19, 2024
<b>Document Number:</b>	005204564-01
<b>Revision Number:</b>	2.0
<b>Classification:</b>	Public
<b>Reporting Period:</b>	November 1, 2023–March 31, 2024



---

<b>Company</b>	RWE Offshore Wind Holdings, LLC
<b>Project</b>	Offshore Wind Project, California
<b>Package</b>	N/A
<b>Asset</b>	Lease No. OCS-P 0561 (Lessee Company No. 15061)
<hr/>	
<b>Document Title</b>	RWE Progress Report #2
<b>Ecodoc Number</b>	005204564-01
<b>Revision Number</b>	02

---

This document and any information therein are confidential property of RWE Renewables and without infringement, neither the whole nor any extract may be disclosed, loaned, copied or used for manufacturing, provision of services or other purposes whatsoever without prior written consent of RWE Renewables, and no liability is accepted for loss or damage from any cause whatsoever from the use of the document. RWE Renewables retains the right to alter the document at any time unless a written statement to the contrary has been appended.

---

<b>Date</b>	<b>Version No.</b>	<b>Description of Changes</b>
5/31/24	01	Original submission to BOEM for the reporting period from November 1, 2023 through March 31, 2024
07/19/24	02	Address minor comments from BOEM received on June 21, 2024

---

---

## Executive Summary

Offshore wind will play a pivotal role in California's transition to a clean energy economy. It is an important renewable resource that both state and federal governments are relying on to meet carbon dioxide emissions reduction goals.

RWE is one of the world's leading renewable energy companies and has a goal of installing 65 gigawatts (GW) of clean energy capacity by 2030. The United States (U.S.) is a key market where significant growth of renewable energy is forecast. Within the U.S., RWE's current portfolio of clean energy projects has a combined capacity of approximately 9 GW and includes onshore wind farms, utility-scale solar photovoltaic, and battery storage facilities.

RWE is also the second largest offshore wind developer in the world with 19 offshore wind projects in operation. It is becoming the fastest-growing offshore wind company in the U.S. after recent acquisitions of approximately 6 GW of seabed capacity off the Pacific, Atlantic and Gulf coasts.

RWE successfully secured the lease rights to an area off the coast of Humboldt County in a competitive auction held by the federal government in December 2022. The lease area is designated as Outer Continental Shelf-Pacific (OCS-P) 0561, and the lease agreement (the "Lease" 1) became effective on June 1, 2023, upon execution by the Bureau of Ocean Energy Management (BOEM) and RWE. In January 2024, RWE officially named the project, Canopy Offshore Wind Farm ("Canopy" or the "Project").

Since securing the lease, RWE continuously engaged with Tribes/Tribal Nations, federal and state agencies, commercial and recreational fisheries, and other interested parties to introduce Canopy and the Canopy Project Team. RWE developed three separate communications plans to support active communication and engagement efforts with commercial and recreational fisheries, Tribes/Tribal Nations, federal, state, and local agencies (including harbor districts) and to create opportunities for their participation throughout the Canopy project's development process.

The Lease requires that RWE submit biannual Progress Reports to inform BOEM and others of the project's activities during the reporting period. This is the second Progress Report covering activities from November 1, 2023 through March 31, 2024.

---

<sup>1</sup> [https://www.boem.gov/sites/default/files/documents/renewable-energy/state-activities/2023-05-16\\_BOEM\\_RWE\\_POCSR\\_Lease-0561.pdf](https://www.boem.gov/sites/default/files/documents/renewable-energy/state-activities/2023-05-16_BOEM_RWE_POCSR_Lease-0561.pdf)

**Overview of Report Sections**

Section 1 provides background of the Canopy project and the overall purpose of progress reporting. Section 2 describes RWE's engagement activities conducted with Tribes/Tribal Nations that may be impacted by the project. A summary of engagements with commercial and recreational fishing communities and fishery regulators is provided in Section 3. Section 4 describes agency engagements and Section 5 includes other types of stakeholders that have not already been described elsewhere. Section 6 summarizes outreach efforts that RWE has conducted to inform other stakeholders about upcoming activities related to site characterization and investigations to support data and information needs for the project. Section 7 describes transmission planning efforts and outreach initiatives related to the future needs for connecting to the onshore electric grid.

Additional information on the Canopy Offshore Wind Farm, Progress Reports and other documentation is available at the Project's website (<https://canopyoffshorewind.com/>).

## Table of Contents

1.0	Background and Purpose .....	1
1.1.	Background of RWE’s California Offshore Wind Project.....	1
1.2	Purpose of the Biannual Progress Reports.....	1
2.0	Tribes/Tribal Nations.....	4
2.1	Summary of Engagements with Tribes/Tribal Nations .....	4
2.2	Potential Project Effects Related to Tribes/Tribal Nations’ Interests.....	8
2.3	Upcoming Engagements with Tribes/Tribal Nations .....	8
3.0	Commercial and Recreational Fisheries.....	9
3.1.	Summary of Engagements with Fisheries .....	9
3.1.1.	Communication and Engagement Frameworks .....	9
3.1.2.	California Coastal Commission Condition 7c Working Group.....	10
3.1.3.	Site Assessment and Survey Planning .....	11
3.1.4.	Collaboration, Knowledge, and Capacity Building .....	11
3.1.5.	Coordination with other leaseholders.....	11
3.2.	Potential Project Effects Raised by Commercial and Recreational Fisheries.....	15
3.3.	Upcoming Engagement Activities With Commercial and Recreational Fisheries .....	15
4.0	Federal, State, and Local Agencies.....	17
4.1.	Summary of Engagements with the Agencies .....	17
4.2.	Potential Project Effects Raised by the Agencies .....	22
4.3.	Upcoming Engagement Activities with the Agencies .....	22
5.0	Other Stakeholders.....	23
5.1.	Summary of Engagement Activities with Other Stakeholders.....	23
5.2.	Potential Project Effects Related to Other Stakeholders .....	26
5.3.	Upcoming Engagement Activities With Other Stakeholders .....	27
6.0	Survey Planning.....	28
6.1.	Summary of Engagement Activities Related to Survey Planning .....	28
6.2.	Potential Project Effects Related to Survey Planning .....	30
6.3.	Upcoming Engagement Activities Related to Survey Planning.....	30
7.0	Transmission .....	32

## Table of Tables

Table 1. Tribal Engagements During the Reporting Period .....	6
Table 2. Fishery Engagements During the Reporting Period .....	13
Table 3. Agency Engagements During the Reporting Period .....	19
Table 4. Other Stakeholder Engagements During the Reporting Period .....	24
Table 5. Engagements related to RWE’s Survey Plan .....	30
Table 6. Engagements related to RWE’s Survey Plan .....	31

## Table of Figures

Figure 1	Map showing the Canopy 2024 Autonomous Underwater Vehicle (AUV) Survey Plan for the Lease Area and Notional Investigative Routes within Federal Waters .....	3
----------	--	---

## Table of Appendices

Appendix A	Project Team Contact Information
------------	----------------------------------

## Glossary of Terms

Term	Definition
ACP	Agency Communications Plan
AUV	autonomous underwater vehicle
BOEM	Bureau of Ocean Energy Management
CAISO	California Independent System Operator
CCC	California Coastal Commission
CDFW	California Department of Fish and Wildlife
CFRA	California Fishermen’s Resiliency Association
CGS	California Geological Survey
CNRA	California Natural Resources Agency
COP	Construction and Operations Plan
CORE Hub	Redwood Region Climate and Community Resilience (CORE) Hub
FCP	Fisheries Communications Plan
ft	feet
G&G	Geological and Geophysical
GW	gigawatt
HASA	Humboldt Area Saltwater Anglers
HFMA	Humboldt Fishermen’s Marketing Association
IHA	Incidental Harassment Authorization
km	kilometers
Lease	Commercial Lease of Submerged Lands for Renewable Energy Development on the Outer Continental Shelf, OCS-P 0561
m	meters
mi	miles
MoorSEA	Mooring Sensors for Environmental Awareness
MMIP	Missing and Murdered Indigenous Peoples
MPC	Marine Planning Committee
NAHC	(California) Native American Heritage Commission
NATCP	Native American Tribal Communications Plan
NGO	non-governmental organization
nm	nautical miles
NOAA	National Oceanic and Atmospheric Administration
NMFS	(NOAA) National Marine Fisheries Service
NWP	Nationwide Permit
OCS	Outer Continental Shelf
OFL	onboard fisheries liaison
OPC	(California) Ocean Protection Council
PFMC	Pacific Fishery Management Council
POC	point of contact
PSO	Protected Species Observer
Q&A	Question and Answer

Term	Definition
RWE	RWE Offshore Wind Holdings, LLC
SLC	(California) State Lands Commission
TAC	Technical Advisory Committee
U.S.	United States
USCG	U.S. Coast Guard
USDOI	U.S. Department of the Interior
USDOL	U.S. Department of Labor



# 1.0 Background and Purpose

## 1.1. Background of RWE's California Offshore Wind Project

In December 2022, RWE Offshore Wind Holdings, LLC (hereafter RWE) was selected as the provisional winner of a bid submitted to the U.S. Department of the Interior (USDOI) Bureau of Ocean Energy Management (BOEM) for a Commercial Lease of Submerged Lands for Renewable Energy Development on the Outer Continental Shelf (Lease). The Lease is designated as Outer Continental Shelf-Pacific 0561 (OCS-P 0561) and became effective on June 1, 2023.<sup>2</sup>

On January 9, 2024, RWE announced the project's name as Canopy Offshore Wind Farm (hereafter Canopy or the project). Canopy's Lease Area encompasses 63,338 acres of seabed in water depths ranging from 1,762 to 3,337 feet (ft; 537 to 1,017 meters [m]) approximately 21 miles (mi; 33 kilometers [km] or 18 nautical miles [nm]) from its closest point to shore in Humboldt County, California (Figure 1). When fully developed, the renewable energy capacity of the Lease Area is estimated to be 1.6 gigawatts (GW), which could theoretically power more than 600,000 homes annually.

Additional information about Canopy, including a copy of this and future Progress Reports, is available on the Canopy website at <https://canopyoffshorewind.com/>. This and other documents will also be posted to the BOEM webpage that is specifically related to Canopy's project activities at <https://www.boem.gov/renewable-energy/state-activities/rwe-offshore-wind-holdings-llc-ocs-p-0561>.

## 1.2 Purpose of the Biannual Progress Reports

In accordance with Lease Addendum "C", 3.1, RWE must submit a Progress Report to BOEM every six months during the site assessment term and the operations term (if a Construction and Operations Plan [COP] is approved). The COP is the application that RWE will submit to BOEM as the first step in the process to start the environmental reviews of the wind farm. This will allow the project to receive the permits and approvals it needs to construct the wind farm and become operational.

This Progress Report is for the second reporting period since the Lease became effective on June 1, 2023. This report covers engagement activities that occurred between November 1, 2023 to March 31, 2024.

---

<sup>2</sup> The Lease is available at: [https://www.boem.gov/sites/default/files/documents/renewable-energy/state-activities/2023-05-16\\_BOEM\\_RWE\\_POCSR\\_Lease-0561.pdf](https://www.boem.gov/sites/default/files/documents/renewable-energy/state-activities/2023-05-16_BOEM_RWE_POCSR_Lease-0561.pdf).

The purpose of these Progress Reports is to document RWE's overall progress and engagement activities related to Canopy that have been undertaken during the reporting period with Tribes/Tribal Nations and other parties, which include (as applicable) federal, state, and local agencies (including harbor districts); commercial and recreational fishing industries and stakeholders; educational and research institutions; environmental and public interest non-governmental organizations (eNGOs and NGOs); mariners, the maritime industry, and other ocean users; submarine cable operators; coastal communities; and underserved communities, as defined in Section 2 of Executive Order 13985 (Advancing Racial Equity and Support for Underserved Communities Through the Federal Government) issued January 2021.

The report is organized as follows: Section 2 (Tribes/Tribal Nations); Section 3 (Commercial and Recreational Fisheries); Section 4 (Federal, State, and Local Agencies); Section 5 (Other Stakeholders); Section 6 (Survey Planning); and Section 7 (Transmission Planning). Appendix A lists the key contacts for Canopy's team.

The report also highlights activities that RWE has participated in with the offshore wind industry in general, including activities between the five California offshore wind leaseholders in federal waters off Humboldt Bay and Morro Bay.

Lastly, the report outlines any known plans for the next reporting period. The deadline for submitting this draft Progress Report to BOEM is June 1, 2024. Within 60 calendar days from receipt of the report, BOEM may request updates to the Progress Report to address comments or clarifications. Once the reviews are finished, BOEM and RWE will post the document to their respective web pages.

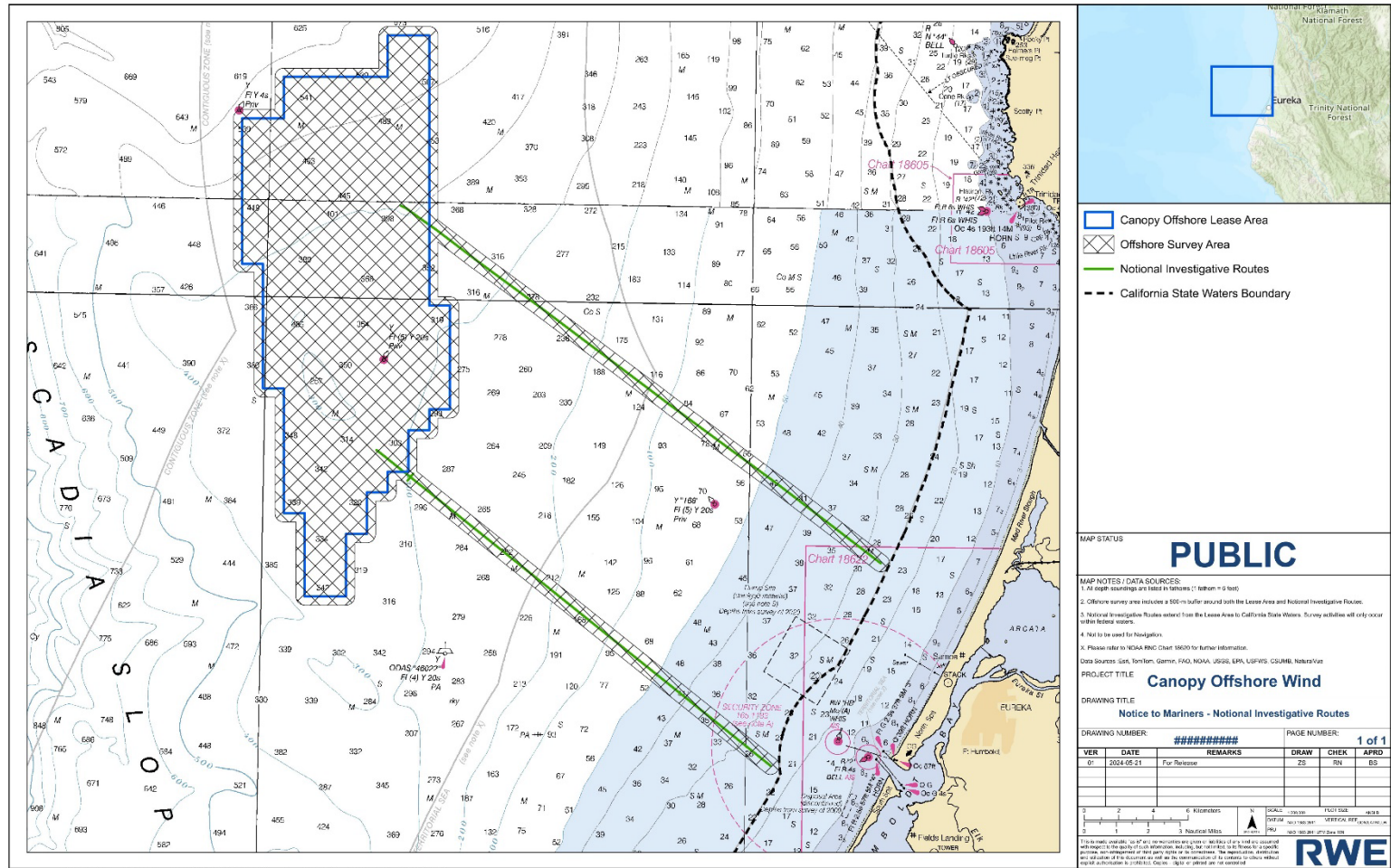


Figure 1 Map showing the Canopy 2024 Autonomous Underwater Vehicle (AUV) Survey Plan for the Lease Area and National Investigative Routes within Federal Waters

## 2.0 Tribes/Tribal Nations

Twenty-one Tribes/Tribal Nations were identified and listed by BOEM or the State of California Native American Heritage Commission (NAHC) as having the potential for historical, cultural, or geographical ties to the Project area. One additional Tribe was added to the list by RWE in consultation with its local tribal consultant for a total of twenty-two Tribes/Tribal Nations. Additional Tribes/Tribal Nations may be added to this list at any time.

RWE recognizes that Tribal values, cultures, and processes are unique to each Tribe. RWE is committed to early, frequent, and meaningful engagement with Tribes/Tribal Nations, including in ways that are unrelated to the Lease or permitting requirements, as preferred and agreed upon by Tribes/Tribal Nations. Tribal engagements offer an opportunity for RWE to learn about each Tribe's unique values, culture, and processes, and to approach discussions in culturally appropriate and respectful ways to build lasting relationships and inform Project development. RWE believes that these working relationships will strengthen as trust and mutual understanding is built between RWE and Tribes/Tribal Nations.

During this reporting period, RWE continued to engage with Tribes/Tribal Nations to determine the most appropriate means of formal engagement to solicit feedback related to the Canopy Project including the development of communication processes, meetings to discuss survey planning activities, and addressing any questions from Tribal members about these and other topics of interest. RWE also engaged with Tribes/Tribal members to ensure that proposed survey activities avoid the potential for interactions with Tribal fisheries (refer also to engagements described in Section 3, Commercial and Recreational Fisheries).

A summary of engagement activities held with potentially affected Tribes/Tribal Nations is provided in Section 2.1. and anticipated engagements during the next reporting period are provided in Section 2.3.

### 2.1 Summary of Engagements with Tribes/Tribal Nations

Engagements with Tribal Nations reflected in this reporting period focused on introductions with RWE, engagements to get feedback on RWE's Native American Tribes Communications Plan (NATCP), workforce development meetings, and pre-survey meetings (refer also to section 7.0, Survey Planning). RWE is committed to meaningfully connecting with Tribal Councils, elders, and community leaders to better understand how to most effectively communicate and engage with Tribes/Tribal Nations. In addition to RWE fulfilling the purpose of its Lease obligations related to the NATCP and Tribal pre-survey meetings, RWE values the

conversations these opportunities have presented to engage with and discuss shared priorities and relationship expectations.

There will be an ongoing effort to engage with Tribes/Tribal Nations to share information and ensure there are adequate opportunities for feedback. Comments and feedback from Tribes/Tribal Nations will be accepted at any time. RWE will also work diligently to adapt engagement methods and frequency to meet the needs of each Tribe/Tribal Nation. A summary of these engagement activities is provided in Table 1.

Table 1. Tribal Engagements During the Reporting Period

Focus of Discussion or Engagement	Tribe(s)	Summary of Engagement Activities and Discussion Topics	Follow-up Actions, Activities, Outcomes
NATCP Engagements (November 2023)	Bear River Band of the Rohnerville Rancheria, Big Lagoon Rancheria, Blue Lake Rancheria, Elk Valley Rancheria, Hoh Tribe, Hoopa Valley Tribe, Karuk Tribe, Makah Tribe, Nor-Rel-Muk Wintu Nation, Quartz Valley Indian Community, Quileute Tribe, Quinault Indian Nation, Redding Rancheria, Resighini Rancheria, Round Valley Indian Tribe, Shasta Indian Nation, Shasta Nation Tribe, Tolowa Dee-ni' Nation, Trinidad Rancheria, Tsungwe Tribe, Wiyot Tribe, Yurok Tribe	NATCP engagements per Lease Addendum 3.1.2 included email correspondence, invitations to BOEM meetings, and invitations to RWE-hosted meetings to provide feedback on the NATCP	Continued engagement
Event Attendance (November 2023)	Tolowa Dee-ni' Nation/Cal Poly Humboldt	'A-t'i Xwee-ghayt-nish: Still, We Live On Film Screening	None
Event Attendance (December 2023)	Wiyot Tribe/Cal Poly Humboldt	Tuluwat Reclaimed Film Screening	None
Open invitation and in-person meeting to discuss NATCP with BOEM (December 2023)	Karuk Tribe, Resighini Rancheria, and Shasta Indian Nation	Discussion of NATCP and invitations to provide feedback ask questions	Continued engagement
NATCP Engagements (January 2024)	Bear River Band of the Rohnerville Rancheria, Big Lagoon Rancheria, Blue Lake Rancheria, Elk Valley Rancheria, Hoh Tribe, Hoopa Valley Tribe, Karuk Tribe, Makah Tribe, Nor-Rel-Muk Wintu Nation, Quartz Valley Indian Community, Quileute Tribe, Quinault Indian Nation, Redding Rancheria, Resighini Rancheria, Round Valley Indian Tribe, Shasta Indian Nation, Shasta Nation Tribe, Tolowa Dee-ni' Nation, Trinidad Rancheria, Tsungwe Tribe, Wiyot Tribe, Yurok Tribe	NATCP email reminders, meeting invitations, individual meeting scheduling, associated correspondence.	Continued engagement
Event Attendance and RWE Introductory Presentation (January 2024)	Yurok Tribe Offshore Wind Summit	RWE introductory presentation, informational event participation	Continued engagement

Focus of Discussion or Engagement	Tribe(s)	Summary of Engagement Activities and Discussion Topics	Follow-up Actions, Activities, Outcomes
NATCP and Tribal Pre-Survey Meetings (February 2024)	Bear River Band of the Rohnerville Rancheria, Big Lagoon Rancheria, Blue Lake Rancheria, Elk Valley Rancheria, Hoh Tribe, Hoopa Valley Tribe, Karuk Tribe, Makah Tribe, Nor-Rel-Muk Wintu Nation, Quartz Valley Indian Community, Quileute Tribe, Quinault Indian Nation, Redding Rancheria, Resighini Rancheria, Round Valley Indian Tribe, Shasta Indian Nation, Shasta Nation Tribe, Tolowa Dee-ni' Nation, Trinidad Rancheria, Tsungwe Tribe, Wiyot Tribe, Yurok Tribe	Individual correspondence on NATCP, survey and related topics such as meeting scheduling, RWE provision of proposed survey plan and fact sheet.	Continued engagement
Engagement Meeting (February 2024)	Northern California Indian Development Council	Introductory meeting	Continued engagement
Engagement Meeting (February 2024)	Yurok Tribe	Introductory workforce meeting	Continued engagement
Event Attendance (February 2024)	Yurok Tribe Missing and Murdered Indigenous Peoples (MMIP) Summit	Attendance	Continued engagement
Survey and NATCP Presentation (February 2024)	Northern California Tribal Chairperson's Association	Presentation on survey and NATCP	Continued engagement as needed
Event Attendance (March 2024)	Indigenous Food and Cultural Gathering at Sumeg State Park	Attendance	Continued engagement
NATCP and Tribal Pre-Survey Meetings (March 2024)	Bear River Band of the Rohnerville Rancheria, Big Lagoon Rancheria, Blue Lake Rancheria, Elk Valley Rancheria, Hoh Tribe, Hoopa Valley Tribe, Karuk Tribe, Makah Tribe, Nor-Rel-Muk Wintu Nation, Quartz Valley Indian Community, Quileute Tribe, Quinault Indian Nation, Redding Rancheria, Resighini Rancheria, Round Valley Indian Tribe, Shasta Indian Nation, Shasta Nation Tribe, Tolowa Dee-ni' Nation, Trinidad Rancheria, Tsungwe Tribe, Wiyot Tribe, Yurok Tribe	Continued NATCP and survey correspondence, including mailing of certified letter invitation to pre-scheduled pre-survey meetings and open invitation for individual meetings	Continued engagement



## **2.2 Potential Project Effects Related to Tribes/Tribal Nations' Interests**

Tribes/Tribal Nations have expressed a desire for early and frequent communication to discuss Canopy's project plans, potential impacts and concerns, and opportunities for collaboration with Tribal communities and Tribal businesses. Tribes/Tribal Nations have also expressed capacity concerns relating to their ability to engage with the wind energy industry. RWE is evaluating ways to support Tribal capacity and to increase information sharing and engagement through the life of the Project.

## **2.3 Upcoming Engagements with Tribes/Tribal Nations**

During the next reporting period (April 2024 through September 2024), the Canopy team plans to continue engagements with Tribes/Tribal Nations on the project's survey plans and ways to strengthen the communication processes between RWE and Tribes/Tribal Nations as envisioned in the NATCP document (see also section 7.0). Above all, RWE will continue to focus its efforts on building one-on-one relationships through formal and informal engagement opportunities with Tribal communities in the Project area.



## 3.0 Commercial and Recreational Fisheries

RWE remains committed to continuing an “early and often” approach to understand potentially affected commercial and recreational fisheries’ concerns so that the Project is developed in an environmentally, socially, and culturally sustainable manner. Throughout this reporting period, the Canopy team continued to engage with various commercial and recreational fishery constituents identified as potentially interested in or affected by the Project.

A summary of engagement activities with Commercial and Recreational Fisheries for the reporting period is provided below.

### 3.1. Summary of Engagements with Fisheries

Between November 1, 2023 and March 31, 2024, RWE had more than 25 direct substantive engagements with at least 80 fishery participants and constituents. This number does not include over one hundred informal and electronic communications (e.g., emails, phone calls, texts) that supported ongoing dialogue, relationship building, and information sharing.

In addition, there were group-level engagements that RWE staff were involved in to support the California Coastal Commission (CCC) Condition 7c Working Group, which has been charged with developing a strategy for the state to address fisheries impacts from the five lease areas in federal waters offshore Humboldt and San Luis Obispo counties.

Overall, the Canopy Team’s fishery engagements during this period have been diverse, covering a range of fisheries, geographies, and constituent groups. Engagement strategies have included one-on-one conversations; small and large group meetings; and presentations and participation at formal meetings, hearings, and briefings. Engagements have included in-person, hybrid, and virtual formats (e.g., video, webinar, phone).

Engagement efforts during this reporting period were focused on five key areas, described below:

#### 3.1.1. *Communication and Engagement Frameworks*

At the conclusion of the prior reporting period, RWE had prepared a draft Canopy/Vineyard Offshore Joint Fisheries Communication Plan (Joint FCP; <https://canopyoffshorewind.com/Home/fisheries-and-ocean-users#fisheries-communications-plan>) and was actively soliciting feedback from the fishing community. Additional engagement on the draft Joint FCP included a meeting with

the Pacific Fishery Management Council (PFMC) Marine Planning Committee (MPC) on November 1, 2023 to present and discuss the Joint FCP, as well as the receipt of additional written comments. RWE worked with Vineyard Offshore to adjust the Joint FCP in response to feedback and then the plan was submitted to BOEM for review. Additional updates were made to the Joint FCP in response to feedback from BOEM.

The Canopy team revised the Joint FCP with Vineyard Offshore, then posted the document on RWE's website and distributed it to the fishing community. In subsequent meetings with key commercial and recreational fishing associations, RWE provided an overview of updates made in the Joint FCP in response to the fishing community's feedback, including substantial changes to clarify the claims process for loss or damage to fishing gear. The Joint FCP was widely distributed within the fishing industry and fisheries management community on February 6, 2024. Like all three of the Project's communications plans, the Joint FCP will remain an "evergreen" document that will be periodically updated as the Project proceeds and as more is learned throughout the engagement process regarding communication preferences of the fishing community and others.

During this reporting period, RWE continued to build internal capacity and expand outreach and engagement activities. Key outcomes from these efforts included:

- Hired and onboarded RWE's Fisheries Liaison and made introductions with key constituent groups.
- Continued discussions with fishery constituents on communication strategies and preferences, and ongoing tracking of feedback to inform Project planning and updates to the Joint FCP.
- Established positive relationships with shoreside processors and other maritime groups.
- Continued curating a list of fishery constituents who have requested to receive email and/or text messages related to the Project; RWE is exploring options for text services and other communications technologies.

### 3.1.2. *California Coastal Commission Condition 7c Working Group*

RWE has been an active participant in the CCC's 7c Working Group since its inception. RWE is also a member of two of the Working Group's subgroups: Subgroup 1 is focused on best practices for site investigation work, and Subgroup 3 is focused on general impacts to fisheries from offshore wind. RWE made multiple presentations to the Working Group on our planned survey activities and participated in nine meetings of the Working Group and its Subgroups during this reporting period. More information about Working group members and meetings can be found here: <https://www.coastal.ca.gov/upcoming-projects/offshore-wind/>.

### 3.1.3. *Site Assessment and Survey Planning*

During this reporting period, RWE had extensive engagement with fishing communities in preparation for site assessment activities. RWE provided pre-survey presentations to the CCC 7c Working Group (February 13, 2024) and PFMC MPC (February 20, 2024) to share information on upcoming survey activities and discuss concerns from the fishing communities. On February 27 and 28, 2024, RWE also met with members and leadership of seven commercial and recreational fishing associations to provide a briefing on planned survey activities and discuss coordination with fisheries. These conversations provided RWE with a more detailed understanding of fishing effort within and around the lease area, including specific fisheries, gear types, locations, and vessels. These fine scale operational details will inform the refinement of communication and coordination protocols for survey activities.

Through these conversations, fishery constituents raised concerns regarding the deployment of a metocean buoy, by a third party, north of RWE's Lease area. The concerns were primarily around potential hazards that could be created from abandonment of the buoy's anchoring equipment. In response, RWE coordinated with AXYS Technologies, the company that was planning to conduct the deployment, to ensure that mooring equipment would be designed to be removed from the seafloor following the removal of the buoy.

### 3.1.4. *Collaboration, Knowledge, and Capacity Building*

RWE continued to engage with state and federal agencies, academic institutions, and research entities to inform Project activities and proactively identify opportunities for collaboration. Engagements during this reporting period include the following;

- Meeting with Cal-Poly Humboldt, Schatz Energy Research Center leadership on February 28, 2024 to discuss workforce development opportunities.
- Meeting with the National Marine Fisheries Service (NMFS) on November 7, 2023 to discuss potential knowledge sharing opportunities regarding floating offshore wind.
- Conversations with federal and state agencies to discuss offshore fisheries related survey and research activities, offshore wind permitting, and science needs (see Section 4).

### 3.1.5. *Coordination with other leaseholders*

RWE continued to proactively coordinate with its lease neighbor, Vineyard Offshore, to streamline communication and engagement with the fishing community. During this reporting period, RWE hosted joint RWE/Vineyard Offshore meetings and one-on-one engagements with fishing associations to reduce duplication, minimize the

burden of participation on stakeholders, and keep each other abreast of activities and concerns.

RWE also partnered with Vineyard Offshore to explore communication tools (e.g., technologies, software) that could be used to streamline communication between the projects and the fishing community. RWE collaborated on a regular basis with other developers working on offshore wind projects in California through a sub-group of the American Clean Power (ACP), which was established in 2023 with representatives of the five California leaseholders.

A high-level summary of RWE's commercial and recreational fisheries engagement activities is provided in Table 2, below. Please note that most engagement activities cover multiple topics and have potential relevance to multiple project phases.

Table 2. Fishery Engagements During the Reporting Period

Focus of Discussion or Engagement	Party(ies) (Number of Engagements)	Summary of Engagement Activities and Discussion Topics	Follow-up Actions, Activities, Outcomes
<p>Introduction to survey planning; updates to communication strategies; identification of fishery constituents; priority issues for the PFMC community  (November 2023)</p>	<p>Regional Fishery Management Council (2)</p>	<ul style="list-style-type: none"> <li>Discussed minor edits to FCP and Council stated the FCP provides sufficient process for communications</li> </ul>	<ul style="list-style-type: none"> <li>Incorporated edits into second draft of FCP</li> <li>Continue regular engagement with PFMC to identify additional constituents and explore how PFMC could serve as a conduit for communications</li> </ul>
<p>Introduction to survey planning; updates to communication strategies, and priority issues for commercial fishing community; characterization of fisheries  (February 2024)</p>	<p>Commercial (7); includes commercial fishermen, shoreside businesses and infrastructure, fishing associations, and trade groups</p>	<ul style="list-style-type: none"> <li>Communication and engagement strategies, tools and preferences</li> <li>Seasonality, distribution, and operational details for commercial fisheries</li> <li>Most likely vessels operating within the lease area during the survey</li> <li>Concerns with using mobile survey gear in the lease area alongside fixed fishing gear</li> <li>AXYS buoy deployment and recovery – Operational/safety concerns with leaving mooring equipment on seafloor.</li> <li>Feedback from fisheries associations on FCP and requests to clarify gear loss claim process</li> </ul>	<ul style="list-style-type: none"> <li>Incorporated information into survey team briefing</li> <li>Discussed models for fisheries representation and coordination</li> <li>Ongoing participation in the CCC Section 7c Fisheries Working Group</li> <li>Selected AUV survey technology to avoid potential entanglements between survey gear and fixed fishing gear for first phase of geophysical survey</li> <li>Worked with AXYS to reconfigure mooring components to facilitate mooring recovery and removal when they remove the buoy</li> <li>Once deployed, RWE will relay AXYS buoy location once deployed</li> <li>Updated FCP to include clear examples and process diagram of gear loss claims process</li> </ul>

Focus of Discussion or Engagement	Party(ies) (Number of Engagements)	Summary of Engagement Activities and Discussion Topics	Follow-up Actions, Activities, Outcomes
<p>Introduction to survey planning; updates to communication strategies, and priority issues for commercial fishing community; characterization of fisheries</p> <p>(February 2024)</p>	<p>Recreational (2); includes recreational fishermen, charter/for-hire captains, recreational fishing association</p>	<ul style="list-style-type: none"> <li>• Survey planning</li> <li>• Communication and engagement strategies, tools and preferences</li> <li>• Operations, seasonality and distribution of private and charter recreational fisheries</li> <li>• Fishing strategies, methodologies, and gear usage</li> </ul>	<ul style="list-style-type: none"> <li>• Incorporated information into survey team briefing</li> <li>• Identified additional opportunities for engaging recreational fishermen</li> </ul>
<p>Introduction to Project and Project team; communication strategies; monitoring and research activities, workforce development, bid credit strategy</p> <p>(February 2024)</p>	<p>Academic or Research Institutions and Programs (1)</p>	<ul style="list-style-type: none"> <li>• Research and monitoring activities currently occurring off the Humboldt Coast</li> <li>• Workforce development</li> <li>• Optimizing work flows to strategize bid credit</li> </ul>	<ul style="list-style-type: none"> <li>• Planned engagement with academic institutions and participation in ongoing efforts, including the Offshore Wind Monitoring Guidance Working Group</li> </ul>
<p>Introduction to Project and Project team; communication and engagement strategies; various fishery, transit, and coordination considerations</p> <p>(February 2024)</p>	<p>Other (4)</p>	<ul style="list-style-type: none"> <li>• Transit considerations in and out of Humboldt Bay, transit lanes, timing of survey activities within the Bay</li> <li>• Possibilities for bringing a 1-ton captain's licensing class to Eureka</li> <li>• Incorporating Northern California wind leases into Waterfront application to facilitate two-way confidential communications between the Project and the fishing fleet</li> <li>• Toured AXYS buoy at the docks and discussed timing and deployment/removal logistics</li> </ul>	<ul style="list-style-type: none"> <li>• Incorporate information into survey team briefing</li> <li>• Consideration of input in survey planning and project design discussions</li> <li>• Provide a demonstration of the Waterfront communications application to fishery associations</li> </ul>

### 3.2. Potential Project Effects Raised by Commercial and Recreational Fisheries

RWE identified several categories of potential Project effects and concerns raised by fisheries participants and fishing communities during this reporting period:

Ecological: There were questions about decibel levels produced by the AUV relative to the hearing ranges of fish and marine mammals.

Safety: Primary concerns surrounding survey work involved the survey vessel impacting traffic flow when passing in and/or out of Humboldt Bay. This was raised by commercial and recreational fishermen, as well as members of the Humboldt Yacht Club. Secondly, concerns were expressed about the nationality of the vessel crew, in terms of potential language barriers when communicating offshore.

Access: Potential restrictions on the ability for recreational and commercial vessels to fish within the Lease Area during and after construction, potential effects on transit patterns through the Lease Area, and potential effects on vessel traffic flow inside and in the channel to Humboldt Bay.

Fishery constituents have emphasized the importance of coordination as a means of avoiding and minimizing impacts to fisheries throughout the Project life cycle and communicating early and often, further reinforcing the importance of our joint FCP. The Project team continues to integrate fishery input and considerations into the overall Project development process and is actively working to incorporate concerns related to the marine environment, safety, and access into the Project planning process across the Project's workstreams.

### 3.3. Upcoming Engagement Activities With Commercial and Recreational Fisheries

During the next reporting period, RWE anticipates the following engagement activities with Commercial and Recreational Fishery participants and fishing communities:

- Fisheries Communication and Survey Planning update meeting with the Humboldt Fishermen's Marketing Association (HFMA) and the California Fishermen's Resiliency Association (CFRA) leadership in April 2024
- Pre-Survey kickoff meeting(s) with HFMA and CFRA leadership prior to survey activities
- 7c Working Group in-person meeting in May 2024

- Planning to arrange Global Wind Organization (GWO) safety training for local Onboard Fisheries Liaisons (OFLs) in May 2024
- Continuing survey update meetings to stakeholders



## 4.0 Federal, State, and Local Agencies

Lease Addendum “C”, 3.1.3 details the requirements for RWE to engage and communicate with federal, state, and local regulatory and consulting agencies, including harbor districts (herein defined as “the Agencies”). RWE will be proactively engaged with the Agencies at every stage of Canopy’s development.

At this point in the leasing process, which is called the site investigations stage, the primary avenues for Agencies to provide feedback, address concerns, seek clarifications, and offer insights and opinions center around RWE’s Geophysical and Geological Survey Plan 2024 – 2025 (Survey Plan). Section 5 provides detail about Survey Planning activities themselves, while this section specifically addresses presentations that were provided by RWE to the relevant Agencies during this report period to receive feedback and answer questions. Additional outreach conducted with the Agencies were related to general updates on the project, which are also included here.

### 4.1. Summary of Engagements with the Agencies

The last Progress Report described the process of developing the Agency Communications Plan (ACP), which was posted at <https://americas.rwe.com/ca-agency-comms-plan>). The ACP describes how and with whom RWE will engage to receive their Agencies’ input about the Canopy project during each stage of its development. The ACP currently lists 15 federal agencies; 24 state offices, agencies, or commissions; and one harbor district. RWE has begun engaging with many of these Agencies to provide updates on proposed project activities. Local agencies in the Humboldt region will be added once a point of interconnection to the grid has been identified (refer also to Section 7 on transmission planning).

In early December 2023 (ACP Version 1) and again in early January 2024 (ACP Version 2), RWE submitted revised and updated ACP documents in response to BOEM’s feedback as well as comments received by other Agencies. The ACP is a “living” document so as additional comments are received, these will be included in Version 3, which is currently in progress. It is anticipated that an updated document will be submitted to BOEM in the next reporting period. The current version of the ACP will be posted to the Canopy project website at <https://canopyoffshorewind.com>.

The main focus of work with the Agencies during this reporting period has consisted of the Agencies’ review and feedback on activities proposed in the Canopy Geological and Geophysical (G&G) Survey Plan for 2024 and 2025. RWE’s initial submittal of the survey plan occurred in November 2023. Following BOEM’s 30 day review and comments, RWE updated and resubmitted the plan in December 2023.

The G&G Survey Plan was also submitted to relevant Agencies, per RWE's lease requirements, seeking their input. RWE has held several meetings with BOEM and other Agencies, separately and together, throughout this reporting period to discuss their reviews and comments on the Survey Plan (refer to Section 5 for more details on pre-survey engagements). The Survey Plan was updated based on this feedback and plan approval is expected in May 2024.

Throughout this reporting period, RWE held regularly (bimonthly) meetings with BOEM and RWE staff to address questions about the project and permitting. Many discussions centered around updates on feedback that RWE was receiving from its engagements with Tribes/Tribal Nations. In November 2023, RWE and BOEM's tribal liaison and others discussed the planning related to RWE hosting a virtual Tribal meeting, which BOEM would also attend. The purpose of the virtual Tribal meeting was for RWE to receive feedback on the NATCP and to understand Tribal concerns about early engagements (refer also to Section 3).

Meetings in December with BOEM staff centered around the comments RWE received on its survey plan and additional clarification such as the timing of survey plan review, the type of survey equipment being considered, the coordination of the plan's review with other Agencies, and the training and use of Protected Species Observers (PSOs).

In December, RWE held a discussion with BSEE on oil spill planning information requirements during surveys and COP submittals for all U.S. projects. BSEE is the federal agency that consults with BOEM during the review of the COP to ensure that it and the associated terms and conditions of approval will meet regulatory and industry standards. BSEE's role in the project is to maintain safety and environmental stewardship during RWE's site preparation, construction, installation, operations, and decommissioning on the Canopy project.

In January 2024, RWE met with U.S. Department of Defense (DoD) representatives with the Navy Region Southwest. Discussion topics included RWE's G&G survey planning activities (refer to Section 5) and to the possibility of deploying a metocean buoy. RWE's survey schedule was discussed and brought to the attention of DoD's undersea manager to ensure that the lease area will be clear of any Naval activity during the proposed survey activities. Navy representatives had noted that the lease area, in general, is not a prime area for operations, but that they would be concerned about the use of hydrophone technology potentially causing interference with military activities.

In January, the five leaseholders (including RWE's permitting and supply chain staff who were attending in person) met as a group in Camarillo, California, where BOEM and BSEE have their regional offices. Topics of discussion with BSEE included interest in a tour of a floating offshore wind facility in Europe, the need to start

meeting early and often with California leaseholders, the programmatic environmental impact statement that BOEM plans to prepared, and the division of responsibilities between the state and federal agencies. BSEE Director Sligh recently met with the California leaseholders again at the International Partnering Forum, an important offshore wind conference that was held in New Orleans, Louisiana.

Although not a direct engagement activity, RWE staff attended a presentation in February hosted by the U.S. Environmental Protection Agency (EPA) about OCS air permitting under the Clean Air Act (CAA). The seminar covered topics such as an overview of OCS permitting under the CAA and best practices in OCS air permitting, including expectations for completing OCS permit applications and conducting air quality modeling for OCS projects, which include offshore wind. Additional presentations included an overview of the Federal Permitting Improvement Steering Council (FPISC) and the permitting dashboard for federal projects.

Throughout this reporting period, RWE met monthly with the other California leaseholders and the California Energy Commission (CEC) to discuss offshore wind topics related to the Assembly Bill (AB) 525 Strategic Plan, such as ports, transmission, and permitting. RWE provided general updates on its activities in Humboldt County related to tribal nation engagements, survey plans, and general discussion related to community benefit agreements. In March, the CEC worked with leaseholders to schedule a special Tribal Question and Answer (Q&A) session. The Q&A was held in April as a dedicated hour of introduction, updates, and question and answer opportunities, which was led by the CEC’s Offshore Wind Tribal Working Group.

A summary of Agency engagement activities is provided in Table 3.

*Table 2. Agency Engagements During the Reporting Period*

<b>Focus of Discussion or Engagement</b>	<b>Party(ies)</b>	<b>Summary of Engagement Activities and Discussion Topics</b>	<b>Follow-up Actions, Activities, Outcomes</b>
Floating offshore wind (November 2023)	NOAA Fisheries	Phone call with NOAA Fisheries staff regarding floating offshore wind operations in Europe	RWE will continue to speak with NOAA Fisheries staff and others about its two floating offshore wind demonstration projects located in Spain and Norway; a tour for the Agencies is being considered for 2025
Engagement Meetings (December 2023)	Humboldt County Workforce Development Staff	Information sharing on collaborative initiatives	Continued engagement

Focus of Discussion or Engagement	Party(ies)	Summary of Engagement Activities and Discussion Topics	Follow-up Actions, Activities, Outcomes
NATCP (January 2024)	BOEM	Discuss the scheduling of an RWE-hosted NATCP meeting for Tribes/Tribal Nations in which BOEM would also participate	Refer to Section 3 of the Progress Report for more information and follow-up actions that were related to the NATCP and associated meetings with Tribes/Tribal Nations
Oil spill planning (January 2024)	BSEE	For RWE to better understand BSEE's expectations about oil spill planning and other topics of interest related to site investigations and COP submittal	After COP approval, BSEE will work with the United States Coast Guard (USCG) on a joint review of the Oil Spill Response Plan (OSRP), which will be reviewed for consistency with the National Contingency Plan and the Area Contingency Plan
Survey plan (January 2024)	DoD/Navy	Discuss metocean buoy and survey planning activities to ensure Navy operations are not affected in the area	RWE to provide periodic updates on its schedule for survey activities commencing in summer 2024
Canopy Project (January 2024)	BSEE and other California leaseholders	To understand BSEE's role and responsibilities	BSEE would like to continue to meet often with the leaseholders
Survey planning and outreach updates (regular meetings)	BOEM	BOEM bimonthly meetings	RWE will continue to engage with BOEM to understand their concerns and any other issues they may be hearing from stakeholders
Engagement Meeting (February 2024)	Humboldt County	Information sharing on county legislative priorities for transmission development and underserved communities	Continued engagement, as needed
Survey Plan 2024-2025 (March 2024)	CCC, SLC, BOEM	RWE presented on its Survey Plan and how the activities will meet the conditions in the CCC's consistency review; this was prompted by a CCC letter in February reminding leaseholders about the scope of that original review	RWE will continue to engage with the Agencies on questions that arise regarding RWE's Survey Plan and its consistency with the Agencies' reviews under the Coastal Zone Management Act
Survey plan (March 2024)	CCC, California Natural Resources Agency, CEC	Presentation to California's "Interagency Meeting on Offshore Wind" to discuss the three survey plans submitted by RWE, Equinor, and Ocean Winds	Continued engagement, as needed
Survey Plan 2024-2025 (March 2024)	California Department of Fish and Wildlife (CDFW)	Discuss RWE's surveys for summer 2024 and whether a CDFW scientific collecting permit would be needed	RWE will need to request an SCP if we collect benthic grab samples that target marine infauna either in state waters or that are taken in federal waters and are then brought back into state waters

Focus of Discussion or Engagement	Party(ies)	Summary of Engagement Activities and Discussion Topics	Follow-up Actions, Activities, Outcomes
Survey Plan 2024-2025 (March 2024)	SLC	Discuss proposed equipment planned for 2025 geophysical survey	RWE will continue to engage with the Agencies on questions that arise regarding RWE's Survey Plan and its consistency with the Agencies' reviews under the Coastal Zone Management Act
Canopy project (March 2024)	CAISO	RWE and Vineyard Offshore teams met with the CAISO transmission team to discuss transmission needed for North Coast OSW projects	This dialogue created a line of communication to have further joint updates
Engagement Meeting (March 2024)	Humboldt County Office of Education	Collaboration	Continued engagement
Event attendance and participation (March 2024)	California Energy Commission (CEC)	Regular monthly calls with CEC staff and the five CA leaseholders	RWE actively participates in these meetings to provide requested updates to the CEC, other agencies regarding project development progress, sharing successes, challenges, and lessons learned
Port development (March 2024)	Humboldt Bay Harbor, Recreation and Conservation District	Roundtable with federal, state, and local leaders on port development.	Continued engagement
Event attendance and participation (March 2024)	United States Department of Interior and United States Department of Labor	USDOL and USDOl Tour of Humboldt Bay to discuss federal funding for port development	Continued engagement
Engagement Meeting (March 2024)	Humboldt Bay Harbor, Recreation, and Conservation District	Information sharing on port development	Continued engagement

## 4.2. Potential Project Effects Raised by the Agencies

- Monitoring opportunities and interest in sharing of data during site investigations
- Survey equipment that is proposed for use during site investigations and whether they meet SLC's low-energy seismic regulations
- Potential military operational concerns if hydrophones are used on metocean buoys

## 4.3. Upcoming Engagement Activities with the Agencies

During the next reporting period, the Canopy project team anticipates the following engagement activities are likely to occur with the Agencies:

- Nationwide Permit (NWP) 6 will be issued for the geotechnical and benthic investigations that are proposed to occur in July 2024.
- An Incidental Harassment Authorization (IHA) permit application may be submitted to NOAA related to survey activities proposed for summer 2025.
- RWE will obtain a copy of the survey vessel's oil spill plan and coordinate that document with the USCG and CDFW's Oil Spill Prevention and Response department.
- RWE will provide regular updates to Agencies on survey activities including any changes to the schedule (refer to Appendix A of the ACP that lists RWE's commitments to Agencies during this phase of the project).
- RWE plans to meet with NOAA Fisheries staff to start getting their input on design considerations for the benthic habitat and biological surveys that are proposed to start later in July or early August 2024.
- RWE will also meet with the Ocean Protection Council (OPC) and other Agencies who are involved in a biweekly interagency meeting. These meetings bring together various CDFW, Energy Commission, OPC, and others. The primary focus of these meetings is to discuss the environmental considerations surrounding offshore wind development.
- RWE and Agencies will discuss opportunities for collaboration during site characterization studies and surveys such as with the incidental collection of biological data.
- RWE will communicate survey vessel movements to the appropriate Agencies, as required.
- RWE will meet with the CEC led Offshore Wind Tribal Working Group in April.

## 5.0 Other Stakeholders

Other stakeholder entities that could potentially be affected by project activities may include:

- Coastal communities;
- Educational and research institutions;
- eNGOs and NGOs;
- Mariners and the maritime industry;
- Ocean users;
- Submarine cable operators; and
- Underserved communities, including individuals with Limited English Proficiency, as defined in Section 2 of Executive Order 13985.

Not all of these groups will be contacted during each Progress Report and some engagements may be captured in the activities summarized in other sections.

### 5.1. Summary of Engagement Activities with Other Stakeholders

A summary of engagement activities held with other stakeholders is provided in Table 4. These engagements are a key opportunity for Canopy staff to learn about the community, attend local events, learn about local priorities, and share project information. The Canopy team has spent significant time engaging with local university contacts to collaborate on key research and engagement initiatives. The team has also increased its attendance at local events and its support of local priorities. These efforts will continue through the next progress report.

Engagement with environmental organizations is primarily recorded in the survey planning section below. RWE Offshore Wind has become a member of OCEaN (Offshore Coalition for Energy and Nature). The coalition of around 30 organizations (including NGOs, wind industry players and transmission system operators), is a forum for information exchange and discussion that offers members unique opportunities to learn from each other's experience, widen their knowledge and assess research needs to accelerate the deployment of offshore wind energy while ensuring the promotion of healthy marine ecosystems. RWE's offshore business aims to position itself as a global knowledge leader on biodiversity and has set a goal to achieve a net-positive impact on biodiversity for new assets from 2030. These types of activities strengthen RWE's position as a world leader in offshore wind energy.



RWE continues its involvement with local, state, and national eNGOs as part of a joint offshore wind developer/eNGO working group. RWE is also working with the California Marine Sanctuary Foundation’s work on the Ocean Protection Council funded work to develop a framework for monitoring the environmental impacts of offshore wind development off of the California coast. That effort will begin in mid-2024 and RWE has been and will remain involved by participating on working groups and providing developer input and information.

Another way that RWE strengthens its leadership position and advancing floating wind technology includes our involvement as representatives with the Mooring Sensors for Environmental Awareness (MoorSEA). This group was formed to consider ways to reduce hazards related to marine debris that could cause entanglement risks around floating offshore wind farms. Some of the topics that the MoorSEA Technical Advisory Committee (TAC) plans to address includes: evaluating and providing recommendations for tangible benefits to California; providing recommendations for technology transfer including potential commercialization; providing a sounding board regarding barriers and opportunities; helping to identify key areas where the project has a competitive advantage, value proposition, or strength upon which to build; advocating across respective networks; and reviewing and commenting on proposed performance metrics. RWE staff attended the first meeting of the MoorSEA TAC in March 2024.

*Table 3. Other Stakeholder Engagements During the Reporting Period*

<b>Focus of Discussion or Engagement</b>	<b>Party(ies)</b>	<b>Summary of Engagement Activities and Discussion Topics</b>	<b>Follow-up Actions, Activities, Outcomes</b>
Engagement Meetings (December 2023)	Humboldt Builders Exchange	Meetings to discuss project plans	Continued engagement
Engagement Meetings (December 2023)	Cal Poly Humboldt	Meetings to discuss areas of overlapping research in lease area	Continued engagement
Sponsorship/Event Attendance (December 2023)	Humboldt Library Foundation	Collaboration	Continued engagement
Project Presentation (December 2023)	Eureka Rotary	Project Updates	Continued engagement
Engagement Meetings (January 2024)	350 Humboldt	Project updates	Continued engagement and collaboration
Project Presentation (January 2024)	Southwest Rotary of Eureka	Project details and development plan	Continued engagement



Focus of Discussion or Engagement	Party(ies)	Summary of Engagement Activities and Discussion Topics	Follow-up Actions, Activities, Outcomes
Sponsorship/Event Attendance (January 2024)	Eureka Chamber of Commerce	Collaboration	Continued engagement and collaboration
Engagement Meetings (January 2024)	Cal Poly Humboldt	Meetings to discuss areas of overlapping research in lease area, support of Pacific Offshore Wind Consortium	Continued engagement
Joint Offshore Wind Developer/eNGO Working Group (January 2024)	Environmental Defense Center, Monterey Bay Aquarium, Natural Resources Defense Council, Audubon California, Ocean Conservation Research, The Ocean Foundation, Center for Biological Diversity, Surfrider Foundation (Note: Additional eNGOs were invited to this call but were not present.)	Quarterly meeting between OSW developers and eNGOs to provide project updates and discuss issues, concerns, and shared priorities.	Continuation of regular meetings, Canopy updates to be provided in greater detail on separate meetings with eNGOs
Sponsorship/Event Attendance (January 2024)	Fortuna Rotary	Collaboration	Continued engagement
Sponsorship/Event Attendance (February 2024)	Humboldt Historical Society	Collaboration	Continued engagement
Sponsorship/Event Attendance (February 2024)	Humboldt Bay Aquaculture Symposium	Information engagement with local aquaculture	Continued engagement
Sponsorship/Event Attendance (February 2024)	Operating Engineers Local 3 District 40	Collaboration	Continued engagement
Project Presentation (February 2024)	Old Town Rotary	Project updates	Continued engagement
Sponsorship/Event Attendance (February 2024)	Arcata Chamber of Commerce	Collaboration	Continued engagement
Engagement Meeting (February 2024)	Greater Eureka Chamber of Commerce	Collaboration	Continued engagement

Focus of Discussion or Engagement	Party(ies)	Summary of Engagement Activities and Discussion Topics	Follow-up Actions, Activities, Outcomes
Engagement Meeting (February 2024)	Cal Poly Humboldt Strategic Initiatives	Collaboration	Continued engagement
Engagement Meeting (February 2024)	Schatz Energy Research Center	Collaboration	Continued engagement
Sponsorship/Event Attendance (February 2024)	Southwest Eureka Rotary	Collaboration	Continued engagement
Engagement Meeting (March 2024)	Hospice of Humboldt	Collaboration	Continued engagement
Engagement Meeting (March 2024)	North Coast Small Business Development Center	Collaboration	Continued engagement
Engagement Meeting (March 2024)	Community Economic Resilience Consortium	Collaboration	Continued engagement
Engagement Meetings (March 2024)	Pacific Offshore Wind Consortium/Cal Poly Humboldt	Collaboration	Continued engagement
Sponsorship/Event Participation (March 2024)	Big Brothers Big Sisters of the North Coast	Collaboration	Continued engagement

## 5.2. Potential Project Effects Related to Other Stakeholders

RWE has engaged with local communities and stakeholders on potential questions and concerns related to proposed project development. These stakeholders have identified the following areas for continued discussion:

- Potential effects to community services such as housing and healthcare
- Potential effects to local construction and development businesses who may not participate in larger construction opportunities
- Potential effects of proposed survey work (see Section 7.0)
- Potential effects on wildlife and habitats from the construction, operation and maintenance, and decommissioning of offshore wind and the need for the monitoring of these potential effects
- Potential positive effects on university initiatives and research opportunities

- Potential positive effects for local climate initiatives

### 5.3. Upcoming Engagement Activities With Other Stakeholders

During the next reporting period, RWE anticipates continuing its engagement with interested parties reflected in Table 4, above. The Canopy team will also continue to increase its engagement with local communities that are not reflected in the table above. The Canopy team is developing strategies to reach communities with limited proficiency in English. This may include, but is not limited to, translating the Canopy Offshore Wind website to different languages, printing materials in Spanish, and engaging in culturally diverse community events.

RWE will continue to provide additional support on the MoorSea work in 2024, which is expected to include the following topics:

- Mooring line simulation: to determine the modeling components most critical for capturing the entanglement and collision dynamics
- Simulate a detection algorithm (i.e., a remote sensing system that determines when to trigger the deployment of a remotely operated inspection vehicle)

## 6.0 Survey Planning

During the reporting period, RWE prepared a 2024-2025 G&G Survey Plan, which outlines a comprehensive strategy aimed at acquiring G&G data to characterize and mitigate potential geohazards on or below the seabed, and to assess biological conditions in the Lease Area and along a notional route(s) to shore (refer to Figure 1) that could inform the location of future export cable route(s).

The team received and reviewed vendor proposals during the period covered by this report and through multiple rounds of engagement. The field was narrowed down to the vendor with the best technology and experience to complete the survey, as specified. Contract negotiations have been ongoing throughout this period and are expected to be completed in the next reporting period.

When the preferred vendor was known, along with the refinement of the scope of work and preferred technologies, the RWE team began preparing for engagement activities with Tribal Nations and various stakeholders. These activities are outlined in the following section.

### 6.1. Summary of Engagement Activities Related to Survey Planning

Lease Addendum “C”, 5.6 requires that RWE coordinate the G&G Survey Plan with the CCC and other state agencies. In general, the purpose of these meetings were to answer questions relating to proposed methodology, awareness of and adherence to environmental regulations, and to answer questions and refine the language used within the proposed survey plan for greater clarity.

The draft plan was submitted to the agencies in January 2024 (refer to Section 3, Agency Coordination, for more information). In March, RWE met with staff of the CCC, California State Lands Commission (SLC), and BOEM to discuss the seven conditions of concurrence that the CCC had submitted to BOEM in 2022, prior to the lease sale, that were intended to cover all activities contemplated during the site investigations phase of the California leases. The March meeting was in response to a letter that the CCC issued to the five leaseholders in February regarding some activities in the survey plans that CCC indicated might be out of scope of those conditions. RWE provided a presentation that described each of the conditions and how the Survey Plan complied with them.

Lease Addendum “C”, 7.4 specifies that RWE and its Qualified Marine Archaeologist will meet with Tribes/Tribal Nations to discuss the Survey Plan and consider requests to monitor portions of the archaeological survey and the geotechnical exploration activities, including the visual logging and analysis of geotechnical samples (e.g.,

cores, etc.). RWE began engaging with Tribal Nations to share information about our planned survey activities and allow time for participants to ask questions.

In early March, certified letters were sent to all 22 Tribes/Tribal Nations inviting them to pre-survey meetings (refer to the list in Table 1). In addition to individual outreach efforts, the Canopy team provided several joint opportunities for local communities and Tribal Nations to learn about proposed survey plans. Meetings were held in locations and at times that afforded participants a reasonable opportunity to participate. These meetings were a mix of in-person and hybrid meetings to increase accessibility and lower the burden of participation (see Table 5). These meetings were scheduled and completed at least 30 calendar days prior to commencement of survey activities.

The Canopy Team also organized meetings with local fisheries and eNGOs to share information about the Survey Plan. An update on 2024 survey planning was provided on a joint offshore wind developer/eNGO working group call on January 25, 2024 and other outreach efforts, as described earlier.

Lease Addendum "C", 4.2.5 also requires RWE to establish and maintain early contact and coordination with the appropriate DoD command headquarters to avoid or minimize the potential to conflict with military operations. This was accomplished in January 2024 when RWE met with the Navy Region Southwest (refer to Section 3, Agency Coordination, for additional details). The Canopy team gave a virtual presentation that primarily centered around G&G survey activities, particularly those starting in summer 2024. RWE's schedule was discussed and brought to the attention of the Navy's undersea manager to ensure that the lease area will be clear of any DoD activity during proposed survey activities. Navy representatives noted that the lease area, in general, is not a prime area for their operations. While the Navy will receive Notices to Mariners, which will be issued prior to the start of survey activities, RWE is also keeping Navy representatives updated on the survey schedule as a vessel gets closer to mobilizing in June 2024.

RWE's G&G survey plan also drove our engagement with other state agencies. During this reporting period, RWE began meeting with California state agencies to talk about the proposed survey plan (see Table 5). During the California agencies' reviews of the Survey Plan, RWE received substantial written comments from the California Geological Survey (CGS) Seismic Hazards Program. CGS staff provided numerous references and updates about data sets that may be useful for the geophysical and geotechnical assessment of the Canopy Lease Area. CGS also noted they are compiling an offshore landslide inventory database for California, which will be published as a CGS Special Report in 2024. Although no large-scale landslides or regions of mass failure appear to be mapped within the region of the Lease Area, it was advised that RWE consider the potential for future slope failures in this area resulting from ground shaking associated with earthquakes on the

Cascadia subduction zone interface, intraslab, and nearby onshore and offshore crustal faults. Similarly, while the tsunami hazard in the deeper offshore areas is considered minimal, the tsunami hazard could be significant in shallower waters and along the coast near the Lease Area, especially from a large earthquake along the Cascadia subduction zone. RWE will need to carefully consider impacts from tsunami hazards on nearshore and onshore infrastructure proposed for the Canopy project

Table 4. Engagements related to RWE’s Survey Plan

Date	Group	Format
January 29, 2024	DoD/Navy Region Southwest (refer to Table 3)	Virtual
February 19, 2024	Northern California Tribal Chairs Association (refer to Table 1)	In-person
February 27, 2024	Fisheries Hybrid Meeting (refer to Table 2)	In-person
February 29, 2024	Humboldt Fishermen’s Marketing Association (HFMA) and Humboldt Saltwater Anglers Association (HASA) Fisheries Meetings (refer to Table 2)	In-person
March 8, 2024	CEC, CNRA, CEC, RWE, Equinor, and Ocean Winds (refer to Table 3)	Virtual
March 13, 2024	CCC, SLC, and BOEM (refer to Table 3)	Virtual
March 13, 2024	CDFW (refer to Table 3)	Virtual

**6.2. Potential Project Effects Related to Survey Planning**

Stakeholders and community members have expressed the following items for continued discussion:

- Potential effects of survey technology and approved mitigative measures
- Potential effects of survey vessel traffic in Humboldt Bay
- Potential effects of survey vessel traffic on ocean users
- Data collection and sharing efforts

**6.3. Upcoming Engagement Activities Related to Survey Planning**

RWE remains committed to continuing an “early and often” approach to understand potentially affected parties’ concerns so that the Project is developed in an environmentally, socially, and culturally sustainable manner. The team will continue to conduct transparent and frequent communication efforts and request feedback to ensure that the impact of survey activities with other ocean users is minimized to the extent practicable. Appendix A of the three “evergreen” communications plans

(NATCP, Joint FCP, and ACP) detail the procedures RWE relies on to guide its site investigation engagement activities.

Prior to commencement of planned survey activities that is to start in the next reporting period, RWE will provide at least two weeks’ notice of the upcoming activities that will be distributed to applicable ocean users (including Tribal Fisheries Departments). This complies with Lease Addendum “C”, 3.1.2 and 6.4.

RWE will also work with the USCG to issue Local Notices to Mariners prior to and during survey activities. Information on survey activities will be posted to the Project website. In parallel, the RWE Fisheries Team will continue outreach and engagement efforts during meetings with constituents and fishery participants.

Additional pre-survey meetings are planned with Tribes/Tribal Nations, agencies, fisheries, and eNGOs in April and May (refer to Table 5).

*Table 6. Engagements related to RWE’s Survey Plan*

<b>Date</b>	<b>Group</b>	<b>Format</b>
April 9, 2024	Tribal Nations Pre-Survey Meeting #1	Hybrid
April 15, 2024	Tribal Nations Pre-Survey Meeting #2	Virtual
April 18, 2024	Statewide eNGO survey engagement meeting	Virtual
April 18, 2024	Local eNGO survey engagement meeting	Hybrid
May 29, 2024	Statewide eNGO survey engagement meeting	Virtual
May 31, 2024	Corps of Engineers’ pre-survey meeting and discussion of Nationwide Permit 6 coverage	Virtual

## 7.0 Transmission

Since the previous Progress Report, California continues to make progress planning new transmission for the Humboldt region, with the draft proposal from the California Independent System Operator (CAISO) including two high voltage lines for connecting North Coast offshore wind as well as an interconnection between these two new lines with Humboldt's existing grid to enable benefits to the local region. It is anticipated that this draft plan (subject to further updates based on stakeholder comments) will be presented for approval by CAISO's governing board in May 2024.

As outlined in the previous Progress Report, these new transmission assets are entirely separate projects to Canopy, developed by different developers and regulated and permitted under a separate process to offshore wind. Therefore in future Progress Reports, we plan to replace the Transmission section with a section (if necessary) to update any relevant engagements specifically relating to Canopy's onshore facilities (e.g., cable landing, onshore cable routes, etc.).



# **Appendix A**

## **Project Team Contact Information**

Name/Title	Role	Contact Information
Cynthia Pyc Director of Permitting & Environment	Oversees U.S. permitting, environmental affairs, environmental compliance, and Tribal engagement	<a href="mailto:Cynthia.Pyc@rwe.com">Cynthia.Pyc@rwe.com</a> (512) 500-1933
Rob Mastria California Project Director	Overall responsibility for delivery of the Project	<a href="mailto:Robert.Mastria@rwe.com">Robert.Mastria@rwe.com</a> (617) 515-4897
James Sun Development Director	Oversees development of the Project including market strategy	<a href="mailto:James.Sun@rwe.com">James.Sun@rwe.com</a> (617) 530-0294
Carliane Johnson Permitting Manager	Manages federal, state, and local permitting of the California Project; primary point of contact (POC) for the ACP	<a href="mailto:Carliane.Johnson@rwe.com">Carliane.Johnson@rwe.com</a> (312) 241-8052
Andrea Hansen Tribal Relations Manager	Manages Tribal engagement on the U.S. West Coast; primary POC for the NATCP	<a href="mailto:Andrea.Hansen@rwe.com">Andrea.Hansen@rwe.com</a> (707) 267-8470
Joel Southall Manager of Environmental Affairs & Sustainability	Collaborates with NGOs, academic institutions, regulators, and other entities focusing on the environmental impacts/benefits of offshore wind development	<a href="mailto:Joel.Southall@rwe.com">Joel.Southall@rwe.com</a> (857) 335-3671
Rick Robins Marine Affairs Manager	Oversees marine affairs and commercial and recreational fisheries engagement of the Project; POC for the Joint FCP; Acting Fisheries Liaison	<a href="mailto:Rick.Robins@rwe.com">Rick.Robins@rwe.com</a> (757) 876-3778
Deirdre Boelke Fisheries Manager	Manages commercial and recreational fisheries engagement; POC for the Joint FCP	<a href="mailto:Deirdre.Boelke@rwe.com">Deirdre.Boelke@rwe.com</a> (978) 518-0638
Ricky Alexander Fisheries Liaison	Manages commercial and recreational fisheries engagement; POC for the Joint FCP	<a href="mailto:Ricky.alexander@rwe.com">Ricky.alexander@rwe.com</a> (312) 504.9085
Ciara Emery Local Government and Stakeholder Engagement Manager	Manages community and stakeholder engagement activities.	<a href="mailto:Ciara.Emery@rwe.com">Ciara.Emery@rwe.com</a> (707) 981-6579
Andrew Meredith Director of Labor Relations	Primary POC for labor engagement activities	<a href="mailto:Andrew.Meredith@rwe.com">Andrew.Meredith@rwe.com</a>
Jody Himango Community Engagement Organizer	Primary POC for community engagements and outreach in the Humboldt region	<a href="mailto:Jody.himango@rwe.com">Jody.himango@rwe.com</a>